

Guide to Welsh Name-Studies

Global search: **llest**

4 instances

Click on [Σ](#) for summaries

-
1. CIT
SUM Davies, Elwyn, '*Hafod* and **llest**: the summering of cattle and upland settlement', *Folk Life* 23 (1985), 76–96. [Σ](#)
 2. CIT
SUM Davies, Elwyn, '*Hafod, hafoty* and **llest**: their distribution, features and purpose', *Ceredigion* 9 (1980), 1–41. [Σ](#)
 3. CIT
SUM Richards, Melville, '*Meifod, llest, cynhaefdy* and *hendre* in Welsh place-names', *Montgomeryshire Collections* 56 (1959–60), 177–87. [Σ](#)
 4. IND Williams, Ifor, *Enwau Lleoedd*, argraffiad newydd (Lerpwl, 1962). [\[llest, 80.\]](#)
-

Home

Global search

Advanced search

Related resources

Guide to Welsh Name-Studies

Global search: **llest**

No. 2 of 4 instances

[Back to results](#)

Davies, Elwyn, *'Hafod, hafoty and llest: their distribution, features and purpose'*, *Ceredigion* 9 (1980), 1–41.

Hafoty and **llest**, like *hafod*, are names associated with upland pastures. *Llest* is principally a farm-name of mid-Wales, not found further north than south Denb and south Mer; in the south it is characteristic of western Glam, and represented by a few examples in Carm. But it is most common in Card and Mont, where it is widespread in upland and moorland, almost always above 600', usually between 1000' and 1400'. *Hafoty*, on the other hand, is characteristically north Walian, and rare in most of mid-Wales: it seems to be in complementary distribution with *llest*. *Hafod* is found throughout the country, but is less common than *llest* in Card, Mont and Radn.

The semantics are unpicked from medieval (and later) sources: laws, literature and estate records, wills, etc. It emerges that *hafodydd* were originally large areas used for seasonal pasture, not the dwellings themselves, though *hafod* comes to

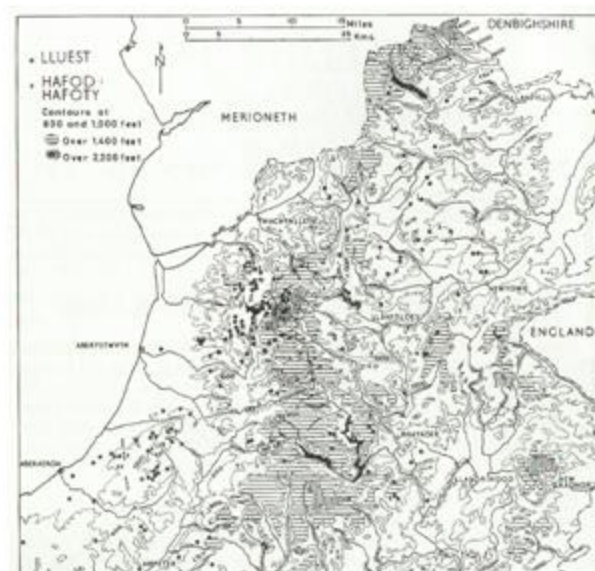


Fig. 1 The distribution of farms with *llest* or *hafod* names in Mid Wales.

[Home](#)

[Global search](#)

[Advanced search](#)

[Related resources](#)